

CORINTH FLAT ON THE SEA



WHILE ENJOYING CORINTH

GET A FLAT IN AN EXCLUSIVE RESIDENCE

AND YOU WILL HAVE YOUR EUROPEAN PERMANENT RESIDENCY

ONLY ONE HOUR FROM THE AIRPORT OF ATHENS BY USING THE NEW HIGHWAY OR COMING STRAIGHT FROM ATHENS BY PUBLIC TRANSPORT YOU WILL REACH THIS CHARMING TOWN WITH ALL ITS PEDESTRIAN STREETS, CROWDED BY BARS, CAFE, RESTAURANTS AND SHOPS. YOU CAN EASILY REACH THE TOWN OF LOUTRAKI (15 MIN.) WITH ITS CASINO AND WONDERFUL BEACHES AND CORNICHE AND NIGHT LIFE.

FOLLOW US ON

BUILDREAMS



FOR MORE INFORMATION

CONTACT US :

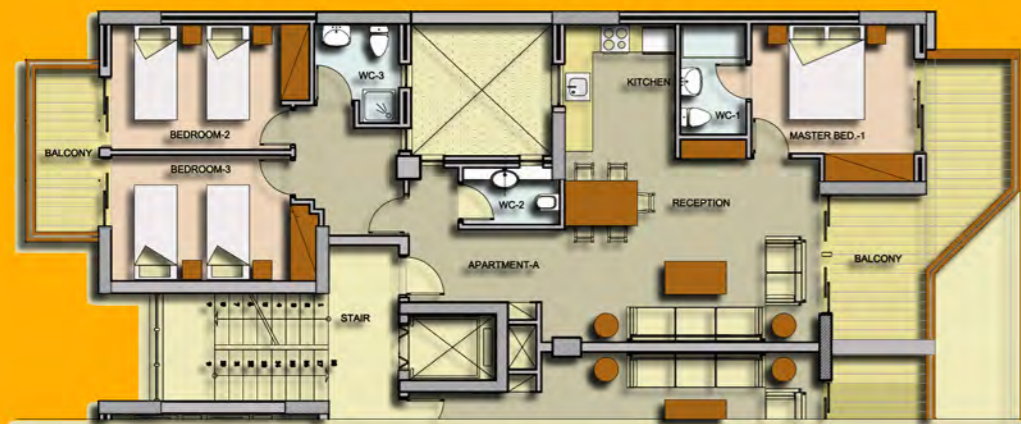
GREECE : +30 6949041547 - 8

LEBANON: +961 71 888 580

BUILDREAMS-GREECE@HOTMAIL.COM

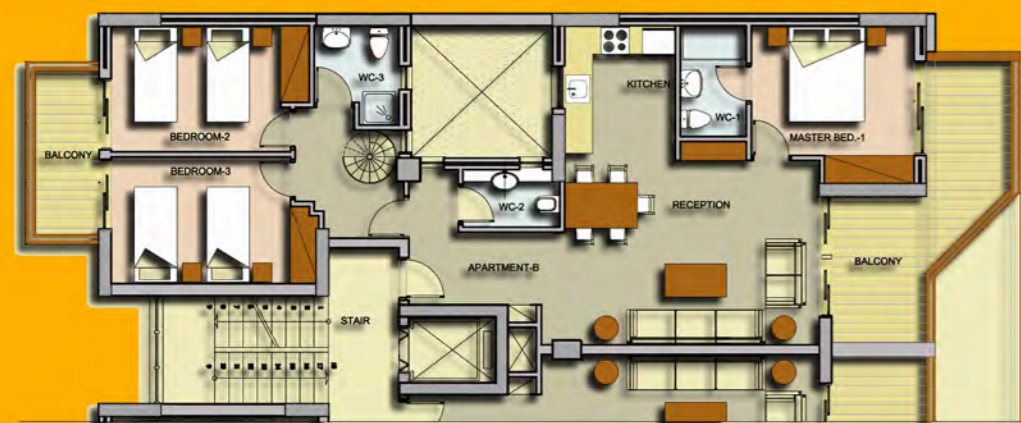


SEA PARK VIEW BLDG.



**LEVEL
1 & 2**

**AREA:
98,34
SQM**



**LEVEL
3
DUPLEX
LOWER LEVEL**

**AREA:
98,34
SQM**



**ROOF
DUPLEX
HIGH LEVEL**

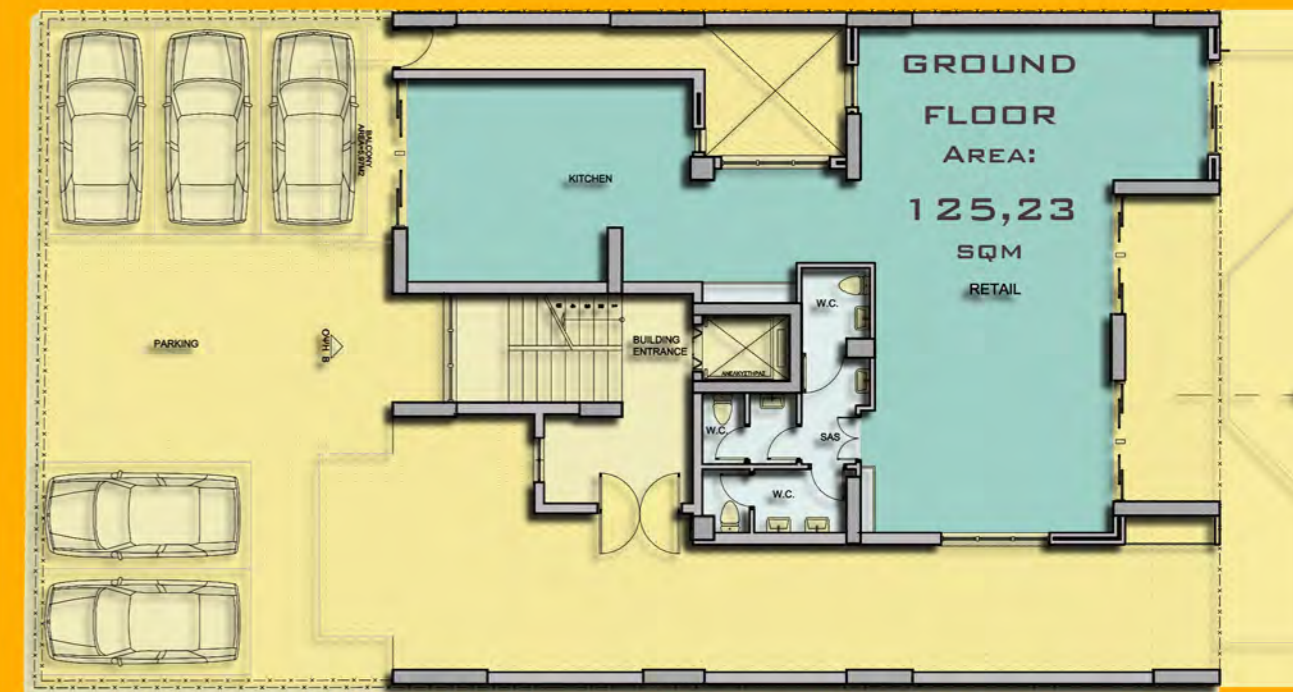
**AREA:
37,87
SQM
PERGOLA:
37,87
SQM**

NEW GREECE WAVE



**LOCATED IN THE TOWN OF CORINTH, IN AN EXCLUSIVE
PEDESTRIAN STREET FACING A PARK AND THE SEA,
(20 METER DISTANCE WITH A FREE ACCESS)
NEXT TO THE PORT.**

HIGH END SPECIFICATIONS



THE PROJECT INCLUDES:

- A - 4 THREE BEDROOMS FLATS OF 98 SQM PLUS BALCONIES.**
 - B - 2 FOUR BEDROOMS DUPLEX OF 136 SQM PLUS BALCONIES AND LARGE OPEN TERRACE WITH PERGOLA.**
 - C- AN EXCLUSIVE AREA OF 125 SQM IN THE GROUND FLOOR FOR SHOPS OR A RESTAURANT.**
- THE BUILDING HAS A SEAVIEW AND DIRECT ACCESS TO THE BEACH, THE PARK AND THE PORT